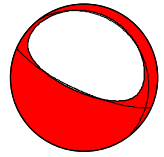
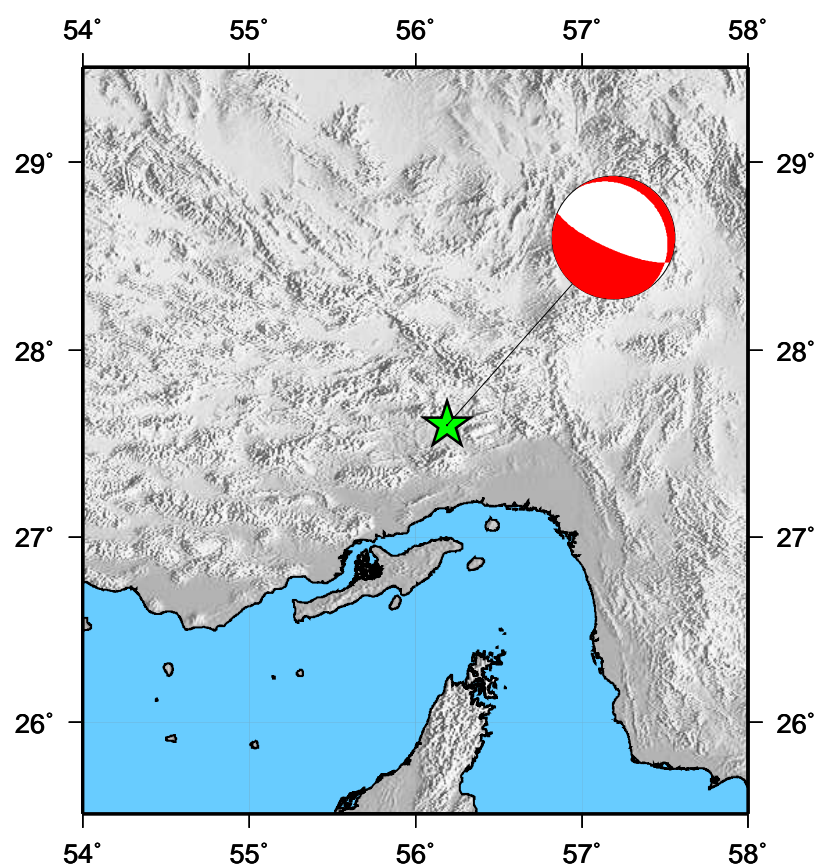
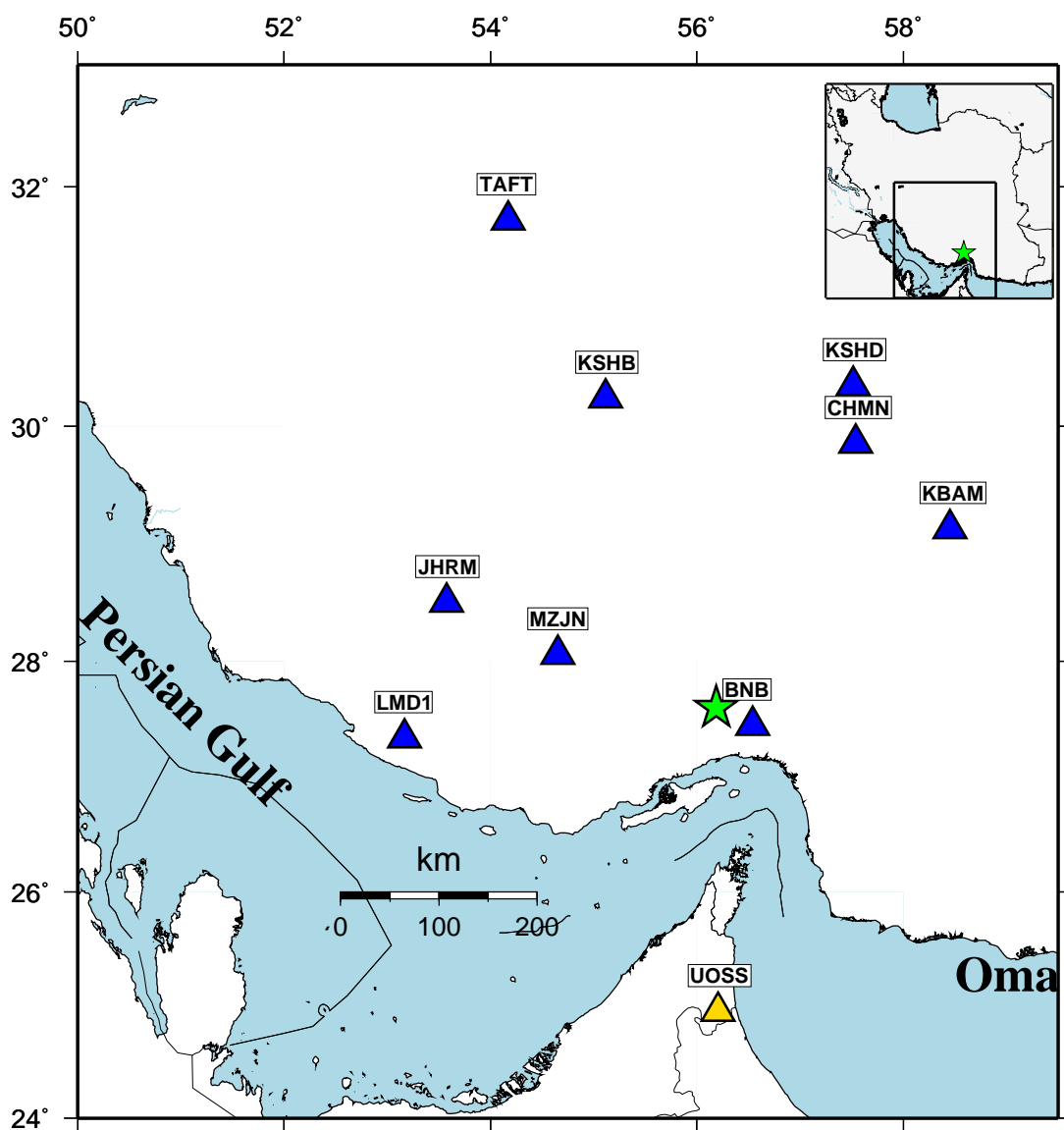
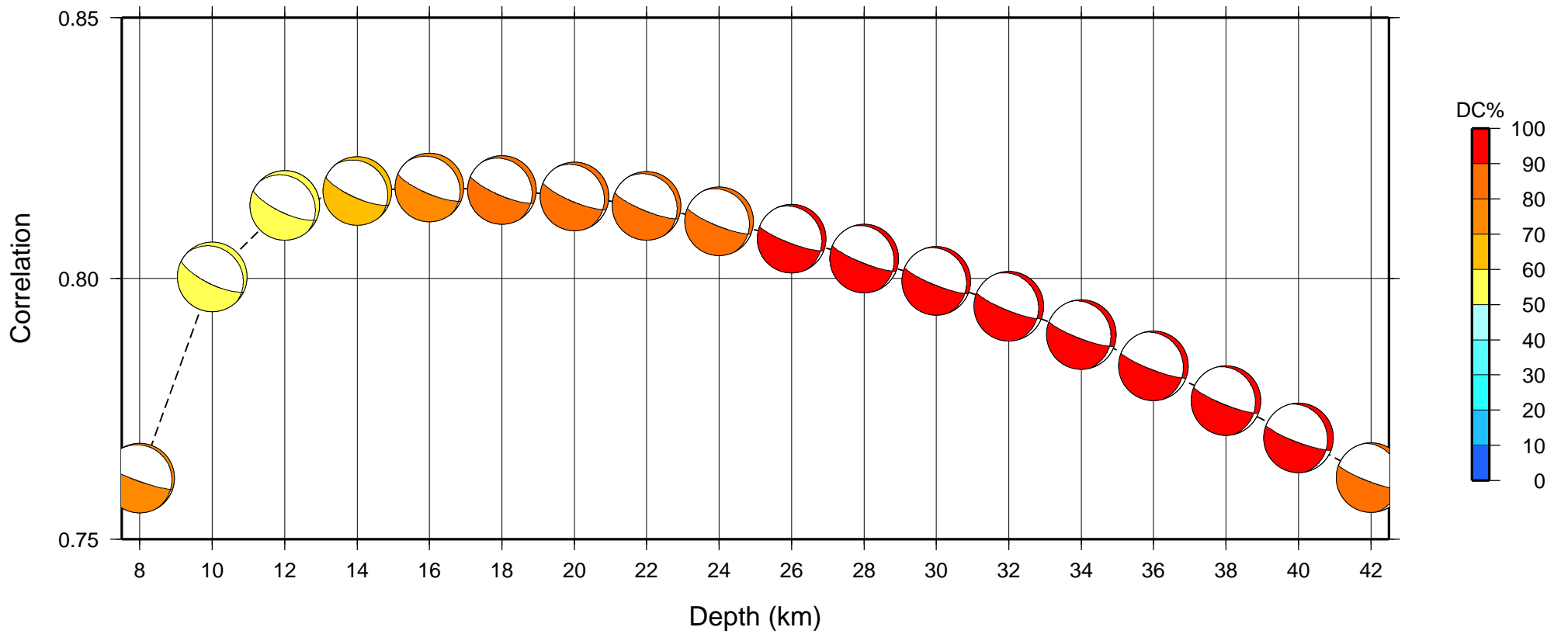


Moment Tensor Solution

Centroid; Lat: 27.6° N, Lon: 56.19° E, Depth: 16 km, Time relative to the origin time (Sec): +1.12
 Mw: 5.1, Moment (N.m): 6.067e+16, DC%: 76.2, CLVD%: 23.8, Variance Reduction: 0.67
 Nodal Planes; strike: 323°, dip: 17°, rake: -62°
 strike: 114°, dip: 75°, rake: -98°
 P-axis; azimuth: 13°, plunge: 59° - T-axis; azimuth: 211°, plunge: 30°
 Moment Tensor (N.m); Mrr: -3.306, Mtt: 1.686, Mpp: 1.619, Mrt: -4.900, Mrp: 1.781, Mtp: -1.195, Exponent :16



Correlation vs Depth



- ★ Event
- ▲ IRSC Stations
- ▲ IIEES Stations
- ▲ Other Stations

Inversion band (Hz) 0.03 0.06
 Gray waveforms weren't used in inversion.
 Black numbers are variance reduction.
 Blue and Red numbers are maximum amplitude (m) of observed and synthetic displacements respectively.

